



MLRIT

Raising Engineers

MLR INSTITUTE OF TECHNOLOGY

ELITE SPORTS

QUOTA POLICY & SOP



MLR INSTITUTE OF TECHNOLOGY

(Autonomous Institution)



MLRIT
Raising Engineers

MLR INSTITUTE OF TECHNOLOGY

**ELITE SPORTS QUOTA POLICY & SOP
IMPLEMENTATION MANUAL VERSION**

(Comprehensive | NAAC/NBA Aligned | Audit & Legal Ready)



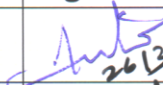
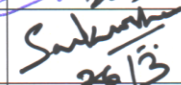

MLRIT

Raising Engineers

MLR INSTITUTE OF TECHNOLOGY

ELITE SPORTS QUOTA POLICY & SOP

Version	1.0 (Original)
Effective Date	26.03.2024
Document Number	MLRIT/2023-2024/ESQP /01
Date of Release (IQAC)	26.03.2024
Process Owner	Head - IQAC
Approved Authority	Principal

Role	Name	Designation	Department	Signature	Date
Prepared By	Mrs. G. Anitha	Assistant professor	IT	 26/3	
Reviewed By	Mr. V.Sai Krishna	Assistant professor	CSE	 26/3	
Approved By	Dr.K.Srinivas Rao	Principal	CSE		

Authentication Note

This document is a controlled and official record of the Institution. Any unauthorized reproduction, modification, or circulation is strictly prohibited. The latest approved version shall be maintained by the Internal Quality Assurance Cell (IQAC) or the designated authority.

Table of content

S.No	Section Title	Page No.
1	Purpose	1
2	End-to-End Lifecycle	1
3	Definitions	2
4	Governance & Authorities	2
5	Admission SOP	2
6	Academic Integration Model	3
7	Eligibility Criteria	5
8	Participation Approval SOP	6
9	KPI System	6
10	Disciplinary & Penalty Matrix	7
11	Removal & Exit SOP	7
12	Roles & Responsibilities	7
13	Academic Support & Recovery	10
14	Documentation & Audit	10
15	ERP & Reporting	10
16	Risk Management	10
17	Grievance & Appeals	10
18	Annexures	10
19	Continuous Improvement	11
20	Final compliance statement	11
21	Legal framework	11
22	Process flow diagrams	12
23	Final Sections (Dashboard, Finance, etc.)	15
24	Student tracking dashboard system	15
25	Financial management & scholarship control system	16
26	Predictive performance analytics system	17
27	Athlete well-being & mental health framework	18
28	Ethics, fair play & anti-doping policy	18
29	Insurance & medical risk coverage	18
30	External linkages & benchmarking	19
31	Capacity building & training system	19
32	Digital verification & fraud control system	19
33	Branding, visibility & outcome utilization	20
34	Policy philosophy statement	20

ELITE SPORTS QUOTA POLICY & SOP
IMPLEMENTATION MANUAL VERSION (Comprehensive | NAAC/NBA Aligned | Audit & Legal Ready)

Document Control

- Version: 1.0 (Implementation Manual)
- Owners: CoE & Director of Sports
- Approval: Principal
- Review: Annual (or as required)

1. Purpose

To operationalize Sports Quota with **end-to-end controls**, ensuring **fair admission, verified participation, continuous academic compliance, and measurable outcomes**. In the evolving landscape of higher education, sports excellence is recognized as a critical pillar of holistic student development, institutional branding, and national representation. Leading institutions such as the Indian Institutes of Technology (IITs), National Institutes of Technology (NITs), and universities like Delhi University and Jain University have demonstrated that a structured and performance-driven sports ecosystem significantly enhances student outcomes and institutional reputation.

However, challenges such as misuse of sports quota, lack of performance tracking, and weak academic integration often dilute its effectiveness. This policy is designed to overcome these gaps by establishing a **robust, transparent, inclusive, and audit-ready framework**.

This document adopts a **"No Talent Missed – No Compromise on Merit"** philosophy, ensuring that every deserving sportsperson is identified and supported, while maintaining strict compliance, accountability, and performance expectations.

2. End-to-End Lifecycle (Control Points)

1. Notification → 2. Application → 3. Verification → 4. Trials → 5. Merit List → 6. Admission → 7. Induction & Undertaking → 8. Academic Mapping → 9. participation Approvals → 10. Monthly Tracking → 11. Quarterly Review → 12. Annual Continuation/Exit

Each stage has **owner, inputs, records, and approval authority**.

Category	Type	Policy Variation
A	Individual Sports	Flexible schedule
B	Team Sports	Fixed participation
C	High-risk Sports	Medical strict
D	Seasonal Sports	Academic priority

3. Definitions (Operational)

- Sports Quota Student (SQS)
- Recognized Body (RB)
- Official Participation (OP)
- Performance Score (PS-100)
- Attendance Relaxation (AR)
- Academic Risk (A Risk: based on attendance, IA, backlogs)

4. Governance & Authorities

4.1 Sports Governance Council (SGC)

- Mandate: Policy oversight, quarterly reviews, final appeals
- Quorum: 3 incl. External Expert
- Records: Minutes, decisions, action logs

4.2 Approval Hierarchy (Non-overridable)

Mentor → HoD → Director of Sports → (CoE/Exam Office for AR/exam cases)

5. Admission SOP

5.1 Notification Stage

Objective: Ensure transparency and equal opportunity

Actions:

- Publish detailed admission notification including:
 - Eligibility criteria (level, validity period)
 - List of recognized federations
 - Weightage system with scoring logic
 - Trial dates, venue, and requirements

Responsibility: Director of Sports

Records: Notification copy, website screenshot, approval note

5.2 Application & Document Verification

Documents Required:

- Sports certificates (last 3 years)
- Identity proof
- Medical fitness certificate
- Self-declaration form

Verification Process:

- Check issuing authority authenticity
- Cross-verify through:
 - o Official federation website
 - o QR code validation
 - o Email confirmation (if required)

Decision Conditions:

- IF certificate is valid → Accept
- IF mismatch or doubt → Mark for secondary verification
- IF fake → Reject + blacklist

Responsibility: Sports Admission Committee

Records: Verified list, rejected list with reasons

5.3 Trial Execution

Objective: Evaluate actual skill beyond certificates

Process:

- Panel includes internal coach + external expert
- Standard evaluation rubric must be used

Evaluation Parameters:

- Technical skills (30%)
- Physical fitness (20%)
- Game understanding (20%)
- Consistency & discipline (15%)
- Attitude & teamwork (15%)

Control Measures:

- Mandatory video recording
- Signed evaluation sheets

Decision Conditions:

- IF performance meets threshold → Eligible
- IF below threshold → Reject (even with certificate)

5.4 Merit List Preparation

Scoring Formula:

Total Score = (Sports Achievement × 0.5) + (Trial Score × 0.3) + (Academic Score × 0.2)

Tie-Break Rules:

1. Higher sports level
2. Higher trial score
3. Higher academic score

Approval: Director of Sports + Committee

5.5 Admission Confirmation & Legal Undertaking

Mandatory Conditions:

- Student must sign undertaking covering:
 - Participation obligation
 - Academic compliance
 - Disciplinary rules

ERP Action:

- Tag student as “Sports Quota”

6. Academic Integration Model

6.1 Academic Monitoring Framework

Parameters Tracked:

- Attendance percentage (weekly tracking)
- Internal assessment scores
- Assignment submission status
- Backlog count

Monitoring Frequency:

- Weekly: Attendance
- Monthly: Academic review

- Semester: Performance evaluation

6.2 Academic Risk Identification

Green Zone:

- Attendance \geq 75%
- No backlog

Orange Zone:

- Attendance 60 – 75%
- 1–2 backlogs

Yellow Zone:

- Attendance 50–60%
- 2–4 backlogs

Red Zone:

- Attendance <60%
- Multiple backlogs

Action Mapping:

- Green → Continue - Everything is on track
- Orange → Early warning + Close monitoring - moderate concern
- Yellow → Mentor intervention - Needs support
- Red → HoD action + restriction - Serious issue / high risk

6.3 Academic Recovery Plan

When triggered:

- Missed classes
- Low internal marks

Steps:

1. Identify gap areas
2. Assign remedial sessions
3. Conduct re-assessment
4. Track improvement

Timeline: Within 7–14 days of identification

6.4 Academic Non-Compliance Handling

Stage 1: Warning + counselling

Stage 2: Academic probation (restricted participation)

Stage 3: Suspension of sports benefits

Stage 4: Removal from sports quota

6.1 NON-NEGOTIABLE REQUIREMENTS:

1. Attendance Compliance

- o Minimum 75% mandatory
- o Relaxation only for approved participation
- o Final attendance must remain within permissible limit

2. Internal Assessment Compliance

- o No exemption from:
 - Assignments
 - Tests
 - Projects

3. Examination Compliance

- o Mandatory participation in all exams
- o Special exams only through approved process

4. Backlog Control

- o Students exceeding limit → probation
- o Continuous backlog → removal

5. Continuous Monitoring

- o Monthly tracking by Mentor + HoD
- o ERP-based monitoring recommended

6.2. Participation Approval System (Merged & Tightened)

Step-wise Approval Flow:

1. Student submits request with proof
2. Mentor validates academic status
3. HoD approves/rejects based on academics
4. Director of Sports gives final approval
5. Entry recorded in ERP

Strict Rule: No Approval = No Participation

6.3 Student Academic Responsibility (Merged & Strengthened)

Students MUST:

- Attend classes regularly when not on official duty
- Complete all academic requirements within deadlines
- Attend remedial/bridge classes
- Communicate proactively with faculty
- Avoid misuse of sports-related permissions

6.4 Academic Protection Clause (Final Strong Version)

Academic performance shall have absolute priority over sports participation.

- Sports cannot be used as justification for:
 - o Poor attendance
 - o Low performance
 - o Academic failure

Enforcement:

1. First Level → Counseling
2. Second Level → Academic Probation
3. Third Level → Removal from Sports Quota

6.5 Critical Rule

Academic performance will always override sports participation in case of conflict.

7. Eligibility Criteria

Eligibility Window: Last 3 years from date of application

Accepted Levels: District / State / National / International (recognized bodies only)

Validation Logic:

- IF issuing body ∈ recognized list → proceed
- IF QR/online record available → verify digitally
- IF not verifiable digitally → email/letter confirmation
- IF mismatch/forgery suspected → escalate to SAC → reject + blacklist (3–5 years)

Mandatory: Medical fitness certificate from registered practitioner

Exclusions: Unrecognized/local tournaments, private events without federation linkage

Records: Eligibility checklist, verification proof logs, decision sheet

8. Participation Approval SOP

Inputs Required:

- Event circular (recognized body)
- Selection/nomination proof
- Academic status sheet (attendance %, IA status, backlog count)

Stepwise Flow:

1. Student submits request (T-7 days minimum)
2. Mentor checks ARisk and pending academics → Recommend / Defer / Reject
3. HoD reviews thresholds:
 - o IF Attendance < 65% OR IA pending → Reject/Defer
 - o IF Attendance 65–74% → Conditional approval with recovery plan
 - o IF ≥ 75% → Approve
4. Director of Sports final approval
5. CoE approval (ONLY if exam clash / special consideration)
6. ERP entry + approval order issued

Exception Handling:

- **Exam Clash:** CoE may allow alternative assessment ONLY if student in Green/upper Yellow band
- **National/International Event (High Priority):** Conditional approval with strict post-event recovery plan
- **Medical Injury During Event:** Medical certificate + academic recovery plan mandatory

Post-Event Compliance (T+3 to T+10 days):

- Submit participation proof
- Complete missed IA/classes via bridge plan
- Mentor closure report

Strict Rule: No approval = No participation (disciplinary action if violated)

Records: Request form, approvals, ERP logs, closure report

9. KPI System (Computation & Normalization)

PS-100 Formula:

- Participation (30): Events count normalized (0–30)
- Achievement (30): Medal/level mapping
- Academics (20): % mapped to 0–20 scale
- Attendance (10): % mapped to 0–10 scale
- Discipline (10): Penalty deductions model

Achievement Mapping (example):

- International Medal: 30
- National Medal: 26–28
- State Medal: 22–24
- Participation only: 10–18 (based on level)

Normalization Rules:

- Cap maximum per component
- Use linear scaling for academics/attendance

Flags:

- Green \geq 70, Yellow 50–69, Red $<$ 50

Outputs: Monthly dashboard, trend lines, alerts

Normalized Score = (Student Value / Maximum Value) \times Weight

- **Max events per semester = ___ (define: e.g., 5)**
- **Attendance cap = 100%**
- **Academic scaling:**
 - o 90–100 \rightarrow Full score
 - o 75–89 \rightarrow Proportional

This avoids subjective evaluation criticism in audit

10. Disciplinary & Penalty Matrix (Scenario-Based)

L1 – Minor (e.g., late submission, first-time absence)

- Evidence: Mentor note
- Action: Written warning

L2 – Repeated Non-Compliance (missed IA, unapproved absence)

- Evidence: Attendance/IA logs
- Action: Benefit suspension (1–4 weeks)

L3 – Academic Failure / Indiscipline (misconduct, repeated backlog)

- Evidence: HoD report, exam records
- Action: Academic probation + participation restriction

L4 – Fraud (fake certificate, impersonation)

- Evidence: Verification proof
- Action: Admission cancellation + debarment + report to authorities

Appeal Window: 7 days \rightarrow SGC decision (final)

Records: Show-cause, response, decision order

11. Removal & Exit SOP (Legally Defensible)

Triggers:

- PS $<$ 50 for two consecutive cycles
- Attendance $<$ 65% post-AR
- Backlogs beyond permissible limit
- Serious misconduct/fraud

Process Timeline:

1. Notice (T0)
2. Improvement Period (1 semester) with documented plan
3. Mid-review (T+2 months)
4. Final SGC review (T+4–5 months)
5. Decision: Continue (with conditions) / Convert to General / Exit benefits

Due Process: Right to be heard, documented evidence, reasoned order

12. Roles & Responsibilities

12.1 Director of Sports

A. Strategic & Governance Role

- Lead planning, implementation, and continuous improvement of Sports Quota Policy
- Align sports calendar with academic calendar to avoid conflicts
- Establish institutional linkages with recognized federations and governing bodies

- Promote inclusivity while maintaining merit-based selection

B. Approval & Control Authority

- Grant **final approval for student participation** ONLY after academic clearance
- Ensure that participation does not conflict with exams, internal assessments, or critical academic activities
- Restrict or withdraw participation in case of academic risk

C. Monitoring & Compliance

- Conduct monthly performance reviews (sports + discipline)
- Ensure all processes (trials, selection, participation) are **transparent and documented**
- Maintain audit-ready records (NAAC/NBA/AICTE compliance)

D. Risk & Accountability Control

- Ensure no over-engagement in sports affecting academics
- Take corrective action in case of misuse, non-performance, or indiscipline

12.2 HoD

A. Academic Control

- Maintain complete academic tracking of sports quota students
- Ensure completion of syllabus, assignments, internal assessments, and exams
- Maintain course-wise academic tracker for SQS
- Enforce IA completion windows
- Approve/reject participation with reasons recorded
- Initiate remediation plans; assign faculty support
- Recommend probation/removal with evidence

B. Participation Approval Role

- Grant **academic clearance** for sports participation
- Verify:
 - Attendance status
 - Internal marks
 - Academic risk level

Right to Reject Participation if academic performance is not satisfactory

C. Monitoring & Intervention

- Conduct structured monthly academic review
- Identify at-risk students and initiate corrective measures
- Recommend:
 - Academic probation
 - Restriction of sports participation
 - Removal from sports quota (if required)

12.3 Mentor

A. Continuous Student Monitoring

- Maintain **individual performance profile** (academic + sports)
- Conduct **monthly one-on-one mentoring sessions**
- Weekly attendance tracking; monthly 1:1 sessions
- Maintain student dossier (IA, attendance, PS)
- Trigger alerts for Yellow/Red; ensure closure
- Verify post-event academic completion

B. Academic Responsibility Tracking

- Ensure:
 - Assignment submission

- o Test completion
- o Project work progress

C. Early Warning System

- Identify decline in:
 - o Attendance
 - o Academic scores
 - o Discipline

Immediately escalate to HoD

D. Student Guidance

- Support time management
- Guide balance between academics and sports

12.4 Sports Coordinator

A. Coordination Responsibility

- Act as **bridge between Sports Dept, HoD, and CoE**
- Maintain master calendar; avoid overlaps
- Log approvals/AR in ERP; generate weekly reports
- Ensure return-to-class compliance within 24–48 hrs post-event

B. Schedule Management

- Align sports events with academic timetable
- Ensure **no unnecessary academic disruption**

C. Documentation & Tracking

- Maintain:
 - o Participation approvals
 - o Attendance relaxation records
 - o Event schedules

D. Compliance Enforcement

- Ensure students:
 - o Resume classes immediately after events
 - o Do not misuse participation privileges

12.5 Coach/Trainer

A. Training & Performance

- Design structured training programs
- Focus on skill enhancement and competition readiness
- Periodized training plans; no clash windows
- Attendance logs for training; discipline reports
- Avoid overtraining; approve competition entries via DoS

B. Academic Coordination (Critical)

- Avoid training during:
 - o Exams
 - o Internal assessments
 - o Important academic sessions

C. Monitoring & Discipline

- Track training attendance
- Report:
 - o Non-performance

- o Indiscipline
- o Irregular participation

D. Ethical Responsibility

- Prevent:
 - o Overtraining
 - o Unnecessary competitions
 - o Academic disruption

12.6 CoE/Exam Office

- Decide on AR/exam accommodations
- Ensure alternative assessments as per rules
- Maintain audit trails for approvals

13. Academic Support & Recovery (Operational)

- **Bridge Classes:** Within 7–10 days of return
- **IA Recovery:** Scheduled re-attempts within policy window
- **LMS Support:** Recorded lectures + notes
- **Peer Tutoring:** Assigned by HoD

Tracking: Mentor closure within 14 days

14. Documentation & Audit (Evidence Matrix)

- Admission: Applications, verification proofs, merit lists
- Trials: Videos, rubrics, panel signatures
- Approvals: Forms, ERP logs, orders
- Academics: Attendance, IA, results, remediation logs
- Performance: KPI dashboards, SGC minutes

Retention: 5–7 years; retrievable within 24 hours for audit

15. ERP & Reporting (Detailed)

- Modules: SQS tagging, approval workflow, AR, KPI engine
- Reports:
 - o Monthly (dept/sport-wise)
 - o Quarterly SGC pack
 - o Annual outcomes (medals, progression)

Alerts: Auto flags for Yellow/Red; email/SMS to stakeholders

16. Risk Management (Controls)

- **Fraud:** Multi-layer verification; blacklist registry
- **Injury:** Medical protocol + academic plan
- **Overload:** Cap events per semester; DoS control
- **Data:** Access control, backups

17. Grievance & Appeals (Procedure)

- Submission via portal/email
- Acknowledgement within 48 hrs
- Hearing within 7–10 days
- SGC decision within 15 days (final)

18. Annexures (Ready-to-Use Templates)

A1. Application & Verification Checklist

- Applicant details, sport, level, year
- Document list with verification status (QR/URL/email)
- Verifier signature & date

A2. Trial Evaluation Sheet (Rubric)

- Parameters (skills, fitness, game sense, discipline, attitude)
- Scoring grid (0–10 each), weighted total
- Panel signatures

A3. Participation Approval Form

- Event details, dates, proof attached
- Mentor recommendation, HoD decision (with reasons), DoS approval
- CoE section (if applicable)

A4. Attendance Relaxation Form

- Period, % requested, justification, approvals, ERP ID

A5. Legal Undertaking (Key Clauses)

- Mandatory representation
- Academic compliance (attendance, IA, exams)
- Consent to penalties/exit
- Authenticity declaration

A6. Monthly Mentor Review Sheet

- Attendance %, IA status, PS components, risk band
- Actions assigned, due dates, closure status

A7. KPI Dashboard Template

- Fields for all PS components; auto-calculation; flags

19. Continuous Improvement

- Annual audit findings → action plan
- Stakeholder feedback (students, coaches, HoDs)
- Benchmark updates; version control

20. Final Compliance Statement

This Implementation Manual ensures **inclusivity with integrity, zero academic compromise, traceable decisions**, and **measurable excellence** across the Sports Quota lifecycle.

21. Legal Framework & Enforceable Clauses

21.1 Binding Nature

All students admitted under Sports Quota (SQS) shall execute a **Legally Binding Undertaking**, forming part of the admission contract. Breach of any clause shall invite actions as per this policy without prejudice to institutional rights.

21.2 Academic Primacy Clause

Notwithstanding any sports achievement or participation, **academic requirements shall have overriding effect**. The institution reserves the right to restrict or withdraw sports participation where academic risk is identified.

21.3 Mandatory Participation Clause

SQS shall **mandatorily represent the institution** in officially approved events when selected. Refusal without valid documented reason shall be treated as non-compliance.

21.4 Authenticity & Fraud Clause

Submission of forged/altered/false documents shall result in:

- Immediate **cancellation of admission**
- **Debarment** for a period determined by the institution
- Reporting to relevant authorities, if applicable

21.5 Attendance & Assessment Clause

- Minimum attendance norms shall apply post-approved relaxation.
- **No blanket exemption** from internal or end-semester assessments shall be granted.
- Alternative assessments, if any, shall be at the sole discretion of the CoE and only under approved cases.

21.6 Due Process & Natural Justice

Before any adverse action (probation/exit), the student shall be provided:

- **Show-cause notice**
- Opportunity to be heard
- Reasoned written order

21.7 Institutional Discretion Clause

All approvals, relaxations, and concessions are **discretionary, conditional, and revocable**, subject to continuous compliance.

21.8 Limitation of Liability

The institution shall not be liable for:

- Injuries during participation (subject to standard safety norms)
- External event cancellations or changes by organizing bodies

21.9 Data & Privacy Clause

Student data collected for monitoring and compliance shall be used for **academic and administrative purposes only**, with controlled access.

21.10 Jurisdiction Clause

“All disputes arising out of this policy shall be subject to the jurisdiction of courts located at [Institution City].”

21.11 Arbitration Clause

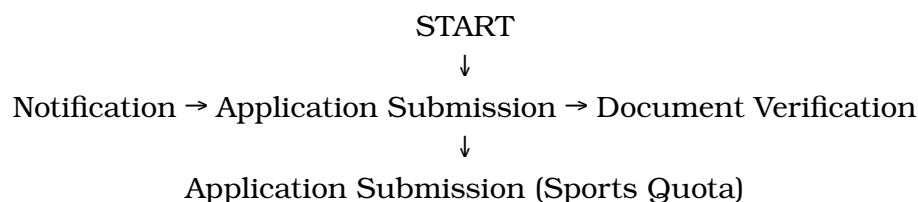
“Any dispute shall first be resolved through internal grievance mechanism, failing which it shall be referred to arbitration under the Arbitration and Conciliation Act, 1996.”

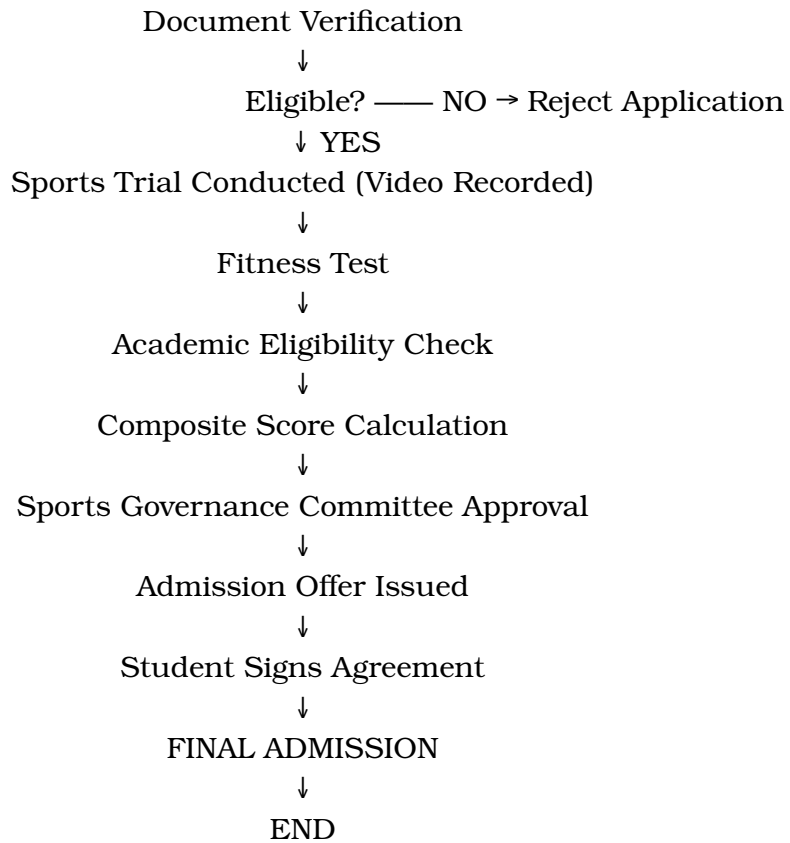
21.12 Indemnity Clause

“The student shall indemnify the institution against any claims, liabilities, or damages arising out of misconduct, violation of sports regulations, or participation-related risks beyond institutional control.”

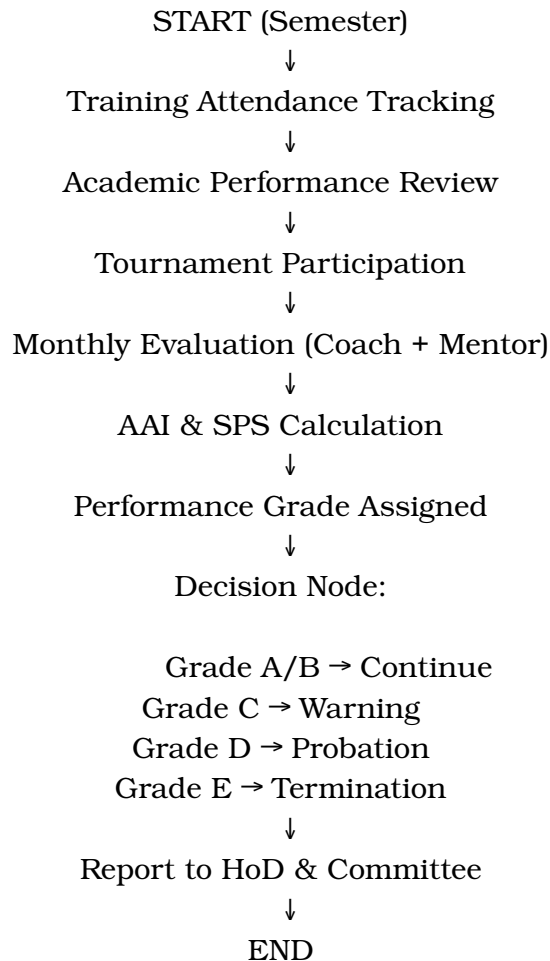
22. Process Flow Diagrams (Implementation Flows)

22.1 Admission Flow

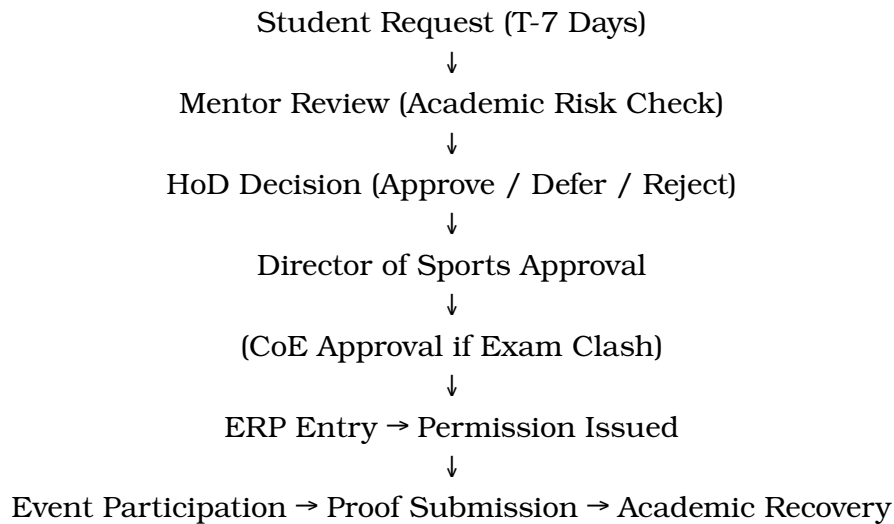




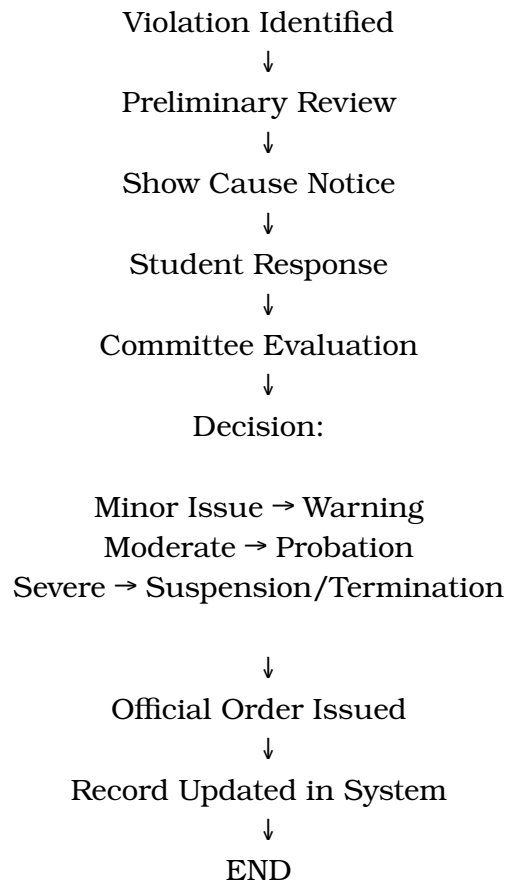
22.2 Performance Monitoring Flow



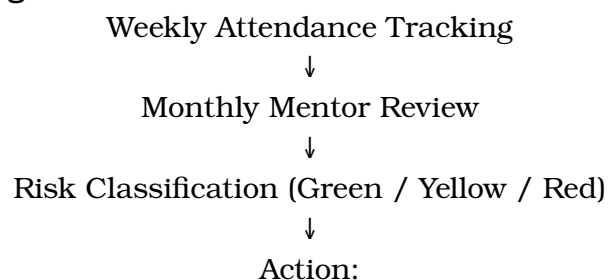
22.2 Participation Approval Flow



22.3 Disciplinary Action Flow



22.4 Academic Monitoring Flow



Green → Continue
Yellow → Mentor Plan
Red → HoD Intervention



Recovery → Re-evaluation → Status Update

22.5 KPI Monitoring Flow

Data Collection (Attendance + Academics + Sports)



KPI Calculation (PS-100)



Dashboard Update



Flag:

Green / Yellow / Red



Action Trigger (Mentor / HoD / DoS)



Monthly & Quarterly Review

22.6 Scholarship Continuation Flow.

Start of Academic Year



Review Previous Year Performance



AAI Score Calculation



Meets Criteria?

YES → Continue Scholarship

PARTIAL → Reduce Benefit

NO → Withdraw Scholarship



Approval by Committee



Update Finance Department



END

23. Final Strength Statement

This document now functions as:

- Policy Framework
- Execution Manual
- Legal Reference Document
- Audit Compliance System

Ensuring **zero ambiguity, full accountability, and institutional excellence.**

24 STUDENT TRACKING DASHBOARD SYSTEM

1. MASTER DASHBOARD STRUCTURE (EXCEL / ERP)

Sheet 1: Student Master Data

Field	Description	Details
Student Reg. No.	Unique ID	
Name	Student Name	
Course	Program	
Sport	Category	
Tier	International/National/etc	
Coach Name	Assigned Coach	

Sheet 2: ACADEMIC TRACKER

S.No	Student Reg. No.	Attendance %	GPA	Backlogs	Mentor Remarks

Sheet 3: SPORTS PERFORMANCE

S.No	Student Reg. No.	Student Name	Events Participated	Medals	Rank	SPS Score

Sheet 4: FITNESS & TRAINING

S.No	Student Reg. No.	Student Name	Training Attendance %	Fitness Score	Injury Status

Sheet 5: DISCIPLINE & COMPLIANCE

S.No	Student Reg. No.	Student Name	Violation	Warnings	Status

2. AUTO CALCULATIONS (IMPORTANT)

Athlete Academic Index (AAI)

$$AAI = (GPA \times 0.5) + (SPS \times 0.5)$$

Sports Performance Score (SPS)

$$SPS = (Participation \times 30\%) + (Achievement \times 50\%) + (Discipline \times 20\%)$$

3. DASHBOARD VISUAL INDICATORS

Indicator	Meaning
<input type="checkbox"/> Green	Excellent
<input type="checkbox"/> Yellow	Needs Improvement
<input type="checkbox"/> Red	Critical

25. FINANCIAL MANAGEMENT & SCHOLARSHIP CONTROL SYSTEM

25.1 Objective

To ensure **transparent, performance-linked financial support** to Sports Quota Students (SQS) with strict control mechanisms to prevent misuse and ensure accountability.

25.2 Scholarship Structure (Standardized Model)

Category	Level	Fee Waiver
Tier 1	International Representation	100%
Tier 2	National Medalist	75–90%
Tier 3	State Level	50–70%
Tier 4	District Level	25–40%

Final percentage decided by **Sports Governance Council (SGC)**

25.3 Disbursement Mechanism

Scholarship shall be **released in phased manner**:

- **Phase 1 (Admission)** → 50%
- **Phase 2 (Mid-Semester Review)** → 25%
- **Phase 3 (End-Semester Performance)** → 25%

25.4 Continuation Criteria

Scholarship continuation is conditional upon:

- AAI ≥ 60
- Attendance ≥ 75%
- No disciplinary violations
- Mandatory participation compliance

25.5 Financial Risk Control

IF conditions:

- IF AAI < 50 → Scholarship **reduced or suspended**
- IF fraud detected → **Full recovery + penalty**
- IF non-participation → **Benefit withdrawal**

25.6 Audit Controls

- All disbursements linked with ERP
- Cross-verification by Finance Office
- Annual audit compliance report

26. PREDICTIVE PERFORMANCE ANALYTICS SYSTEM

26.1 Objective

To move from **reactive monitoring** → **predictive intervention system**

26.2 Data Inputs

- Attendance trends
- GPA trends
- Training attendance
- Injury records
- Participation frequency

26.3 Risk Prediction Model

Indicator	Risk Trigger
Attendance drop >10%	Early Alert
GPA decline	Academic Risk

26.4 Automated Alerts

- Mentor → Immediate notification
- HoD → Escalation if unresolved
- Director of Sports → Review action

26.5 Output Dashboards

- Individual Risk Score
- Department Performance Heatmap
- Medal Prediction Index

26.6 Institutional Impact

- Improves retention
- Enhances medal outcomes
- Strengthens accreditation score

27. ATHLETE WELL-BEING & MENTAL HEALTH FRAMEWORK

27.1 Objective

To ensure **holistic development and psychological stability** of student-athletes.

27.2 Components

A. Psychological Support

- Access to certified counsellor
- Pre-competition mental training
- Post-loss recovery counselling

B. Burnout Monitoring

- Continuous stress tracking
- Reduced training load if required

C. Academic Stress Support

- Time management guidance
- Academic anxiety support

27.3 Mandatory Protocol

- High-performing athletes → Quarterly counselling
- Injury cases → Mandatory mental support

27.4 Confidentiality

All counselling records shall remain **strictly confidential**

28. ETHICS, FAIR PLAY & ANTI-DOPING POLICY

28.1 Objective

To enforce **zero tolerance for unethical practices** in sports.

28.2 Compliance Framework

Aligned with:

- World Anti-Doping Agency guidelines

28.3 Prohibited Actions

- Doping
- Match fixing
- Intentional misconduct
- Identity fraud

28.4 Mandatory Declaration

All SQS must sign:

“I confirm adherence to anti-doping and fair play regulations.”

28.5 Penalty Matrix

Violation	Action
Minor	Warning
Moderate	Suspension
Severe (Doping/Fraud)	Immediate removal + reporting

29. INSURANCE & MEDICAL RISK COVERAGE

29.1 Objective

To protect students against **sports-related risks and liabilities**

29.2 Mandatory Insurance Coverage

Each SQS must be covered under:

- Accident insurance
- Injury treatment coverage
- Emergency hospitalization

29.3 Institutional Responsibility

- Tie-up with hospitals
- Emergency response system
- First-aid and medical kits

29.4 Injury Protocol

1. Immediate medical attention
2. Report submission within 24 hrs
3. Academic recovery plan activation

30. EXTERNAL LINKAGES & BENCHMARKING

30.1 Objective

To align institutional sports system with **national best practices**

30.2 Strategic Partnerships

- Sports federations
- Professional academies
- Government sports bodies

30.3 Benchmark Institutions

- Indian Institutes of Technology
- Delhi University

30.4 Activities

- Joint training camps
- Exchange programs
- Talent scouting

31. CAPACITY BUILDING & TRAINING SYSTEM

31.1 Objective

To ensure **all stakeholders are policy-ready and competent**

31.2 Training Modules

Stakeholder	Training Focus
Mentor	Academic tracking
HoD	Decision-making
Coach	Athlete management
Admin	ERP usage

31.3 Frequency

- Induction training → Mandatory
- Annual refresher → Compulsory

31.4 Certification

Completion certificate required for compliance

32. DIGITAL VERIFICATION & FRAUD CONTROL SYSTEM

32.1 Objective

To eliminate **fake certificates and fraud admissions**

32.2 Multi-Level Verification

- QR code validation
- Federation database check
- Email authentication

32.3 Advanced Controls (Future Ready)

- Blockchain verification system
- National sports database integration

32.4 Blacklist System

- Maintain centralized fraud registry
- Ban period: 3–5 years

33. BRANDING, VISIBILITY & OUTCOME UTILIZATION

33.1 Objective

To convert sports achievements into **institutional growth and reputation**

33.2 Branding Strategy

- Official website updates
- Social media promotion
- Press releases

33.3 Ranking Impact

- Contribution to accreditation
- Contribution to rankings

33.4 Alumni Athlete Network

- Track successful athletes
- Invite for mentorship
- Build legacy system

34. POLICY PHILOSOPHY STATEMENT

“The Sports Quota system of the institution is not a concession mechanism but a structured excellence pathway where talent is identified, nurtured, monitored, and held accountable through measurable academic and athletic outcomes.”



MLRIT

Raising Engineers

MLR INSTITUTE OF TECHNOLOGY

ELITE SPORTS

QUOTA POLICY & SOP



MLR INSTITUTE OF TECHNOLOGY

(Autonomous Institution)